

Panel Rails

- 50 x 25 x 3mm RHS Rails

Tubes

- 40 x 40 x 1.4mm SHS

Tube Spacings

- Approximately 40mm
Typical Spacings (+/- 10mm)
(spread evenly across run)
- 120mm Max Tube Spacings

Substrate & Weld

- T6061 Aluminium

Powder Coating

- Interpon Standard Range

Fully Compliant

- Fully Compliant to
AS1170.1 (2006)

Intermediate Posts

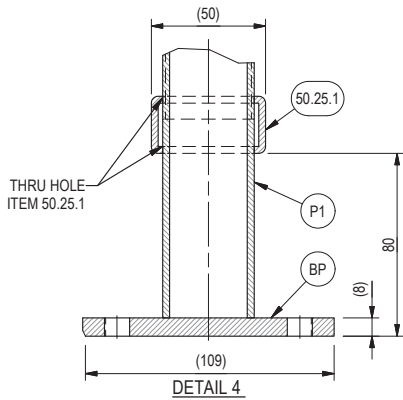
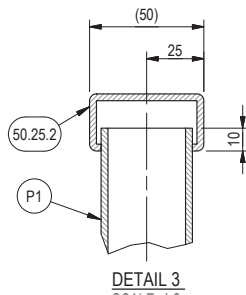
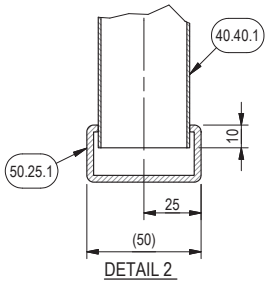
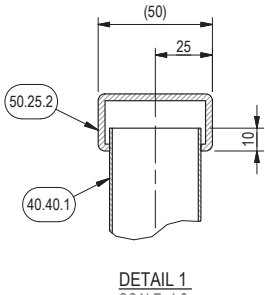
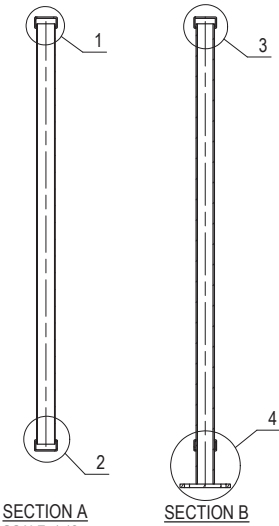
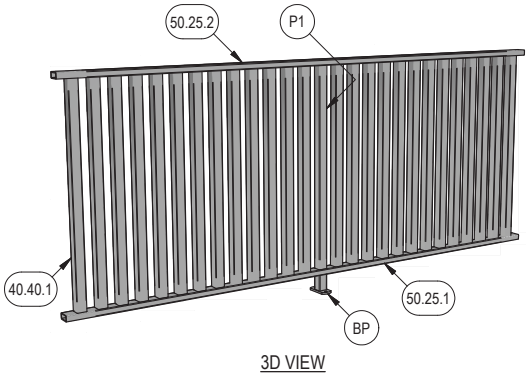
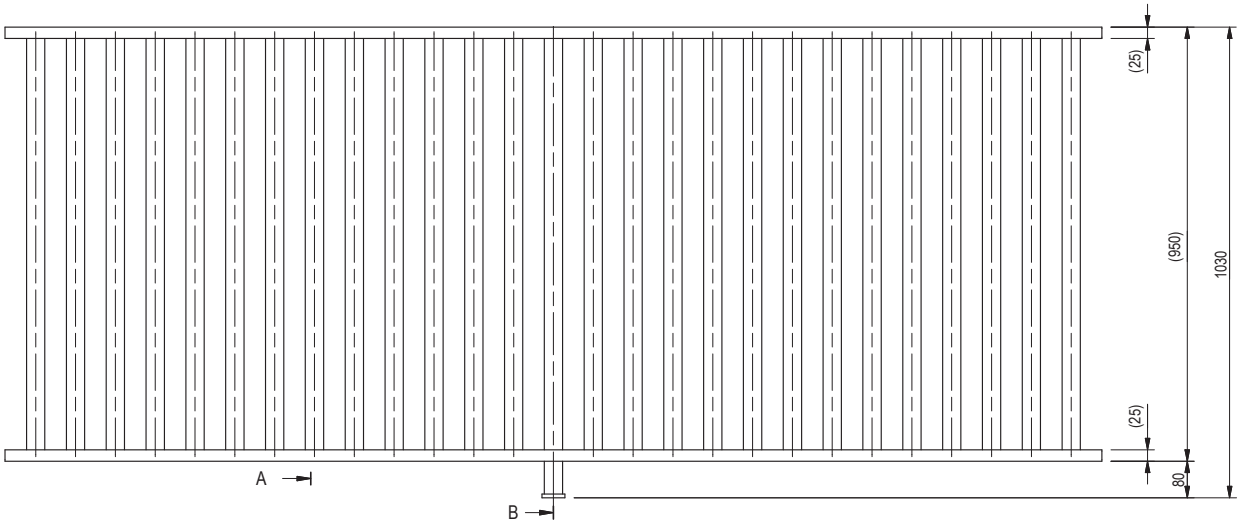
- 40 x 40 x 3mm SHS
- 110 x 50 x 8mm (base plate)
or 300mm leg (core drill)

Intermediate Post Requirement Guide

PANEL WIDTH	POSTS
0 - 1400mm	0
1401 - 2700mm	1
2701 - 3900mm	2
3901 - 4900mm	3
4501 - 5500mm	4
5500mm Max Width Allowed for Balustrade Compliance	

The number of intermediate posts may differ to the above guide depending installation requirements. Please use this table as a guide only.

EXAMPLE BALUSTRADE PANEL @ 2400MM WIDE



CUSTOM STAIR AND RAKED PANELS AND GATES ARE AVAILABLE FOR SPECIAL ORDER



NOT POOL COMPLIANT

Panel Rails

- 75 x 25 x 3mm RHS Rails

Tubes

- 40 x 40 x 1.4mm SHS

Tube Spacings

- Approximately 40mm
Typical Spacings (+/- 10mm)
(spread evenly across run)
- 120mm Max Tube Spacings

Substrate & Weld

- T6061 Aluminium

Powder Coating

- Interpon Standard Range

Fully Compliant

- Fully Compliant to
AS1170.1 (2006)

Intermediate Posts

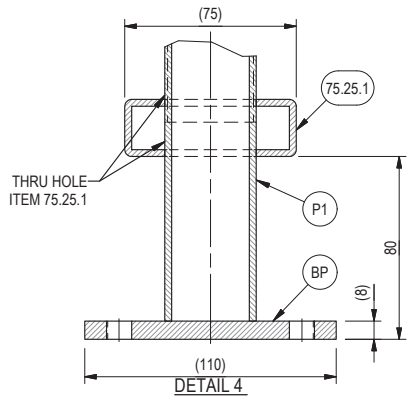
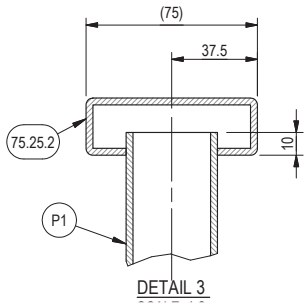
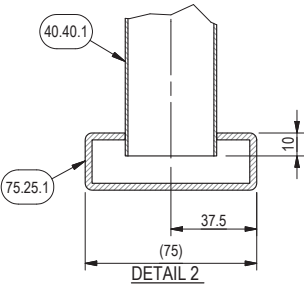
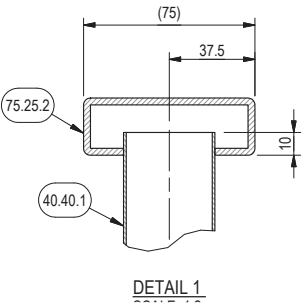
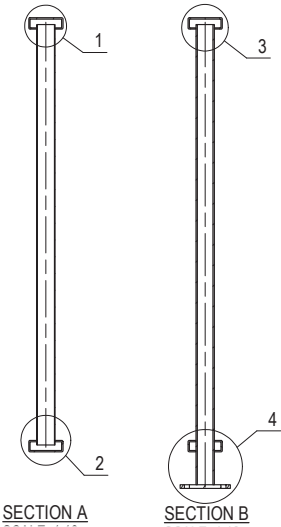
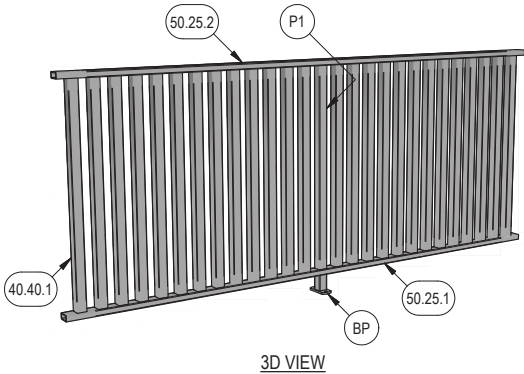
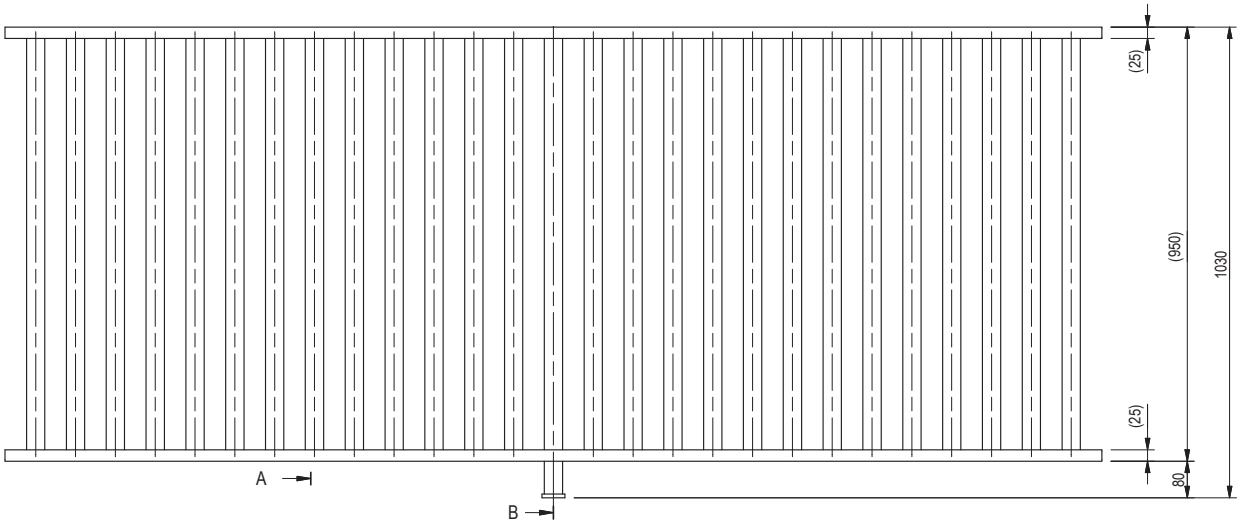
- 40 x 40 x 3mm SHS
- 110 x 50 x 8mm (base plate)
or 300mm leg (core drill)

Intermediate Post Requirement Guide

PANEL WIDTH	POSTS
0 - 1400mm	0
1401 - 2700mm	1
2701 - 3900mm	2
3901 - 4900mm	3
4501 - 5500mm	4
5500mm Max Width Allowed for Balustrade Compliance	

The number of intermediate posts may differ to the above guide depending installation requirements. Please use this table as a guide only.

EXAMPLE BALUSTRADE PANEL @ 2400MM WIDE



CUSTOM STAIR AND RAKED PANELS AND GATES ARE AVAILABLE FOR SPECIAL ORDER



NOT POOL COMPLIANT